344 m²1.162 m²

PLANTA 1

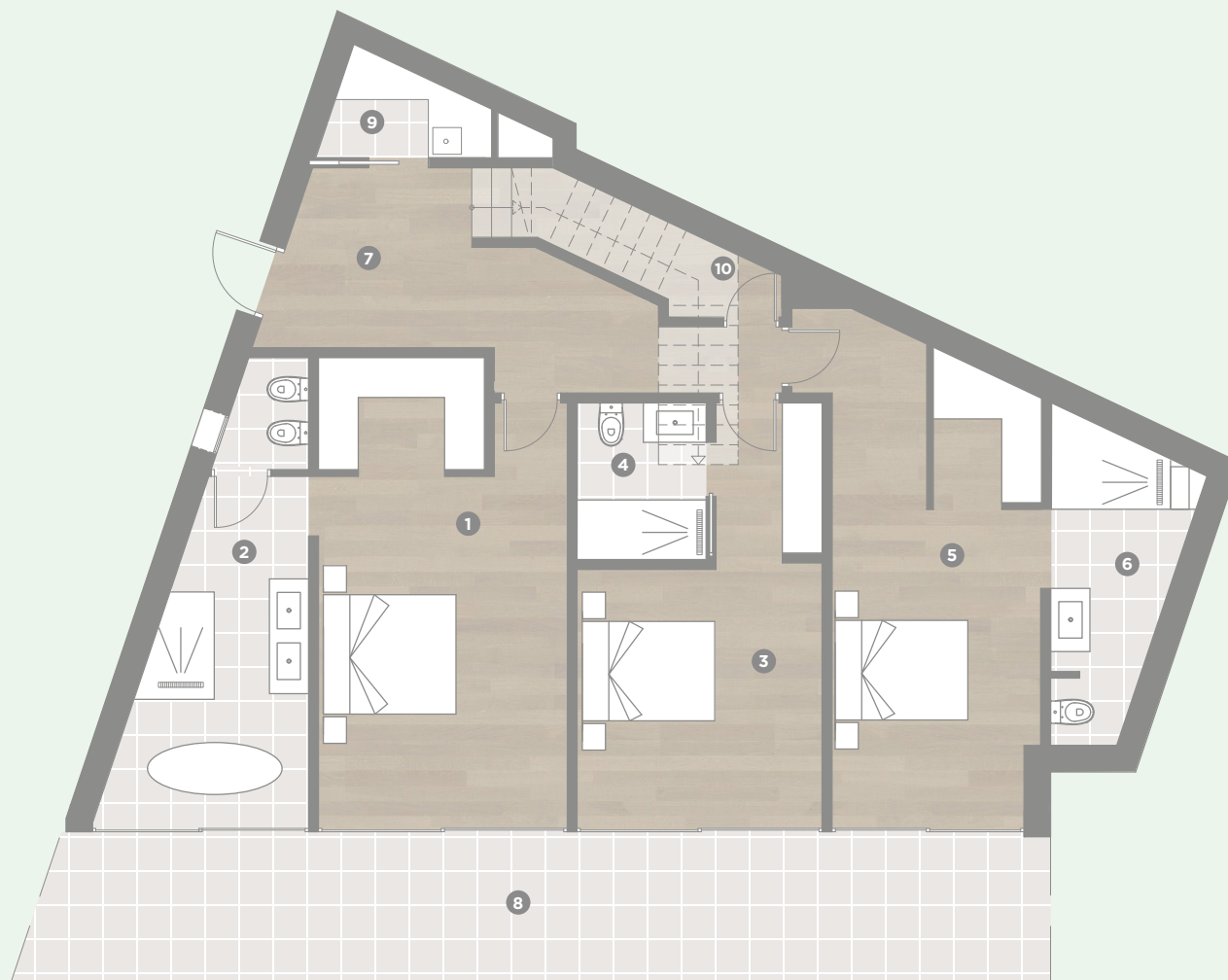
ETAGE 1 / FLOOR 1

- 1 | Salón **36,69 m²**
Wohnzimmer / Living Room
- 2 | Cocina-Comedor **35,42 m²**
Küche - Esszimmer /
Kitchen - Dining Room
- 3 | Aseo 1 **1,84 m²**
Toilette 1 / Toilet 1
- 4 | Vestíbulo **6,13 m²**
Diele / Hallway
- 5 | Acceso garaje **5,27 m²**
Garagenzugang / Garage Access
- 6 | Garaje **28,58 m²**
Garage / Garage
- 7 | Porche **26,95 m²**
Veranda / Porch

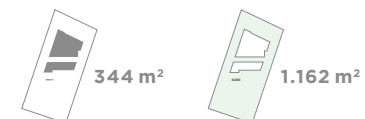
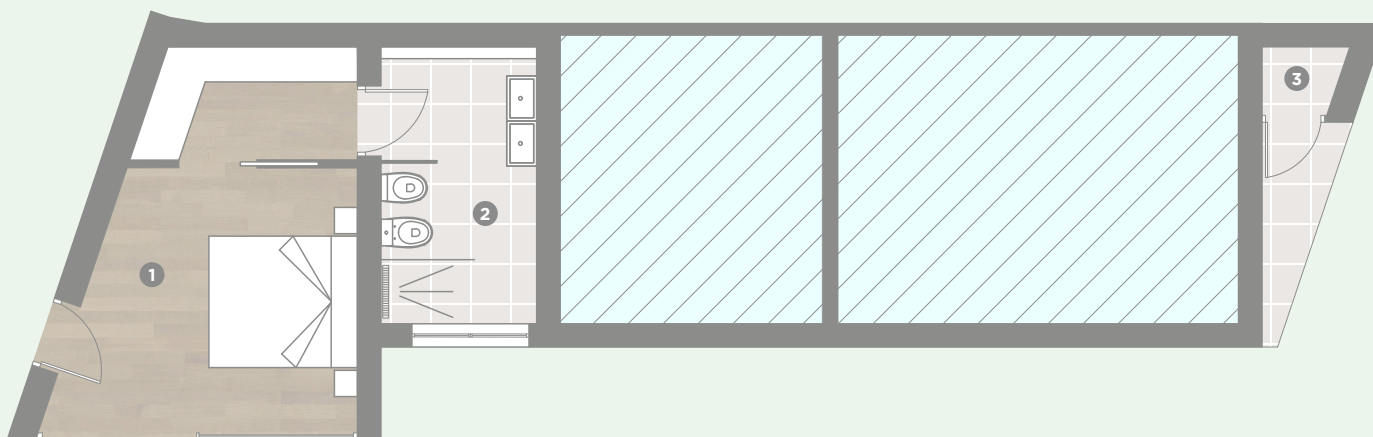
344 m²1.162 m²

PLANTA 0

ETAGE 0 / FLOOR 0



- 1 | Dormitorio 1 **25,32 m²**
Schlafzimmer 1 / Bedroom 1
- 2 | Baño 1 **14,58 m²**
Badezimmer 1 / Bathroom 1
- 3 | Dormitorio 2 **18,56 m²**
Schlafzimmer 2 / Bedroom 2
- 4 | Baño 2 **4,40 m²**
Badezimmer 2 / Bathroom 2
- 5 | Dormitorio 3 **22,70 m²**
Schlafzimmer 3 / Bedroom 3
- 6 | Baño 3 **8,08 m²**
Badezimmer 3 / Bathroom 3
- 7 | Vestíbulo y escalera **14,75 m²**
Diele und Treppe / Hallway and staircase
- 8 | Porche **34,04 m²**
Veranda / Porch
- 9 | Coladuría **3,05 m²**
Wirtschaftsraum / Working room
- 10 | Trastero **4,76 m²**
Storage room / Abstellraum



PLANTA -1
ETAGE -1 / FLOOR -1

- 1 | Dormitorio 4 **16,55 m²**
Schlafzimmer 4 / Bedroom 4
- 2 | Baño 4 **7,40 m²**
Badezimmer 4 / Bathroom 4
- 3 | Almacén piscina **0,73 m²**
Pool Lager / Pool's storageroom