



1.738m²

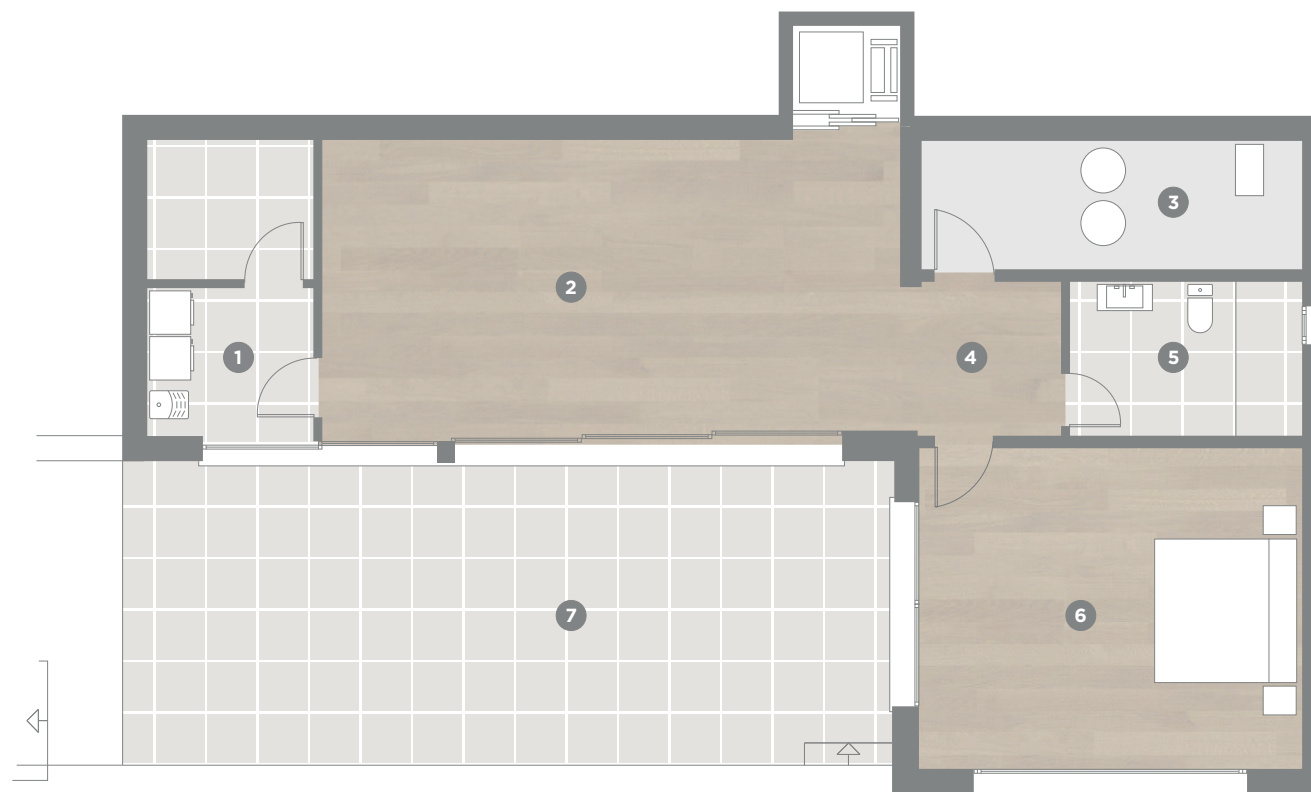


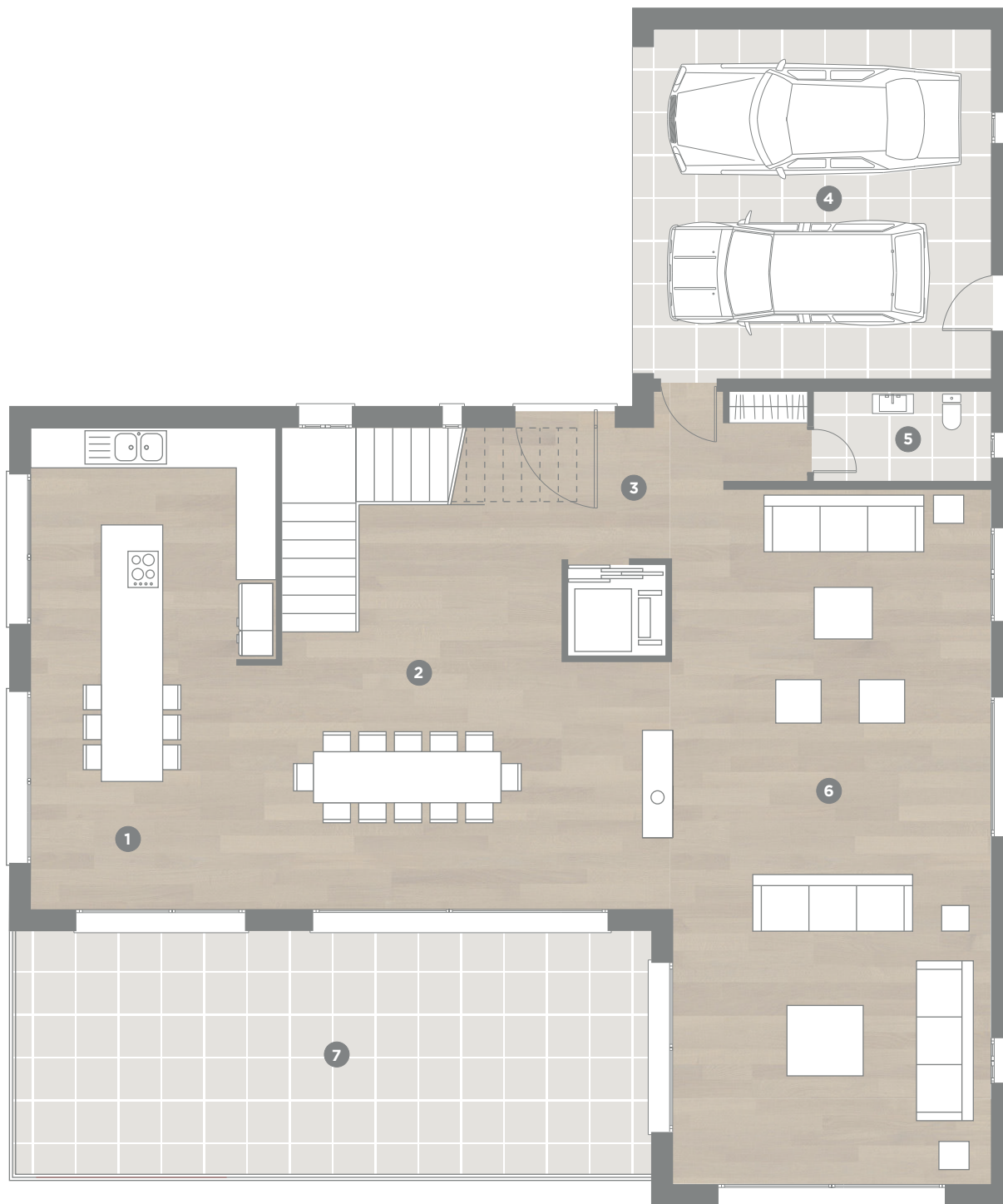
440m²

PLANTA -1

ETAGE - 1 / FLOOR -1

- 1** - Coladuría - 9m²
Wirtschaftsraum / Working room
- 2** - Trastero - 31m²
Abstellraum / Store room
- 3** - Cuarto de máquinas - 9m²
Heizungsraum / Machine room
- 4** - Distribuidor - 4m²
Flur / Corridor
- 5** - Aseo 2 - 7m²
Toilette 2 / Toilet 2
- 6** - Dormitorio 4 - 22,5m²
Schlafzimmer / Bedroom 4
- 7** - Porche 2 - 43m²
Veranda 2 / Porch 2





1.738m²

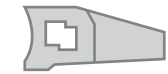
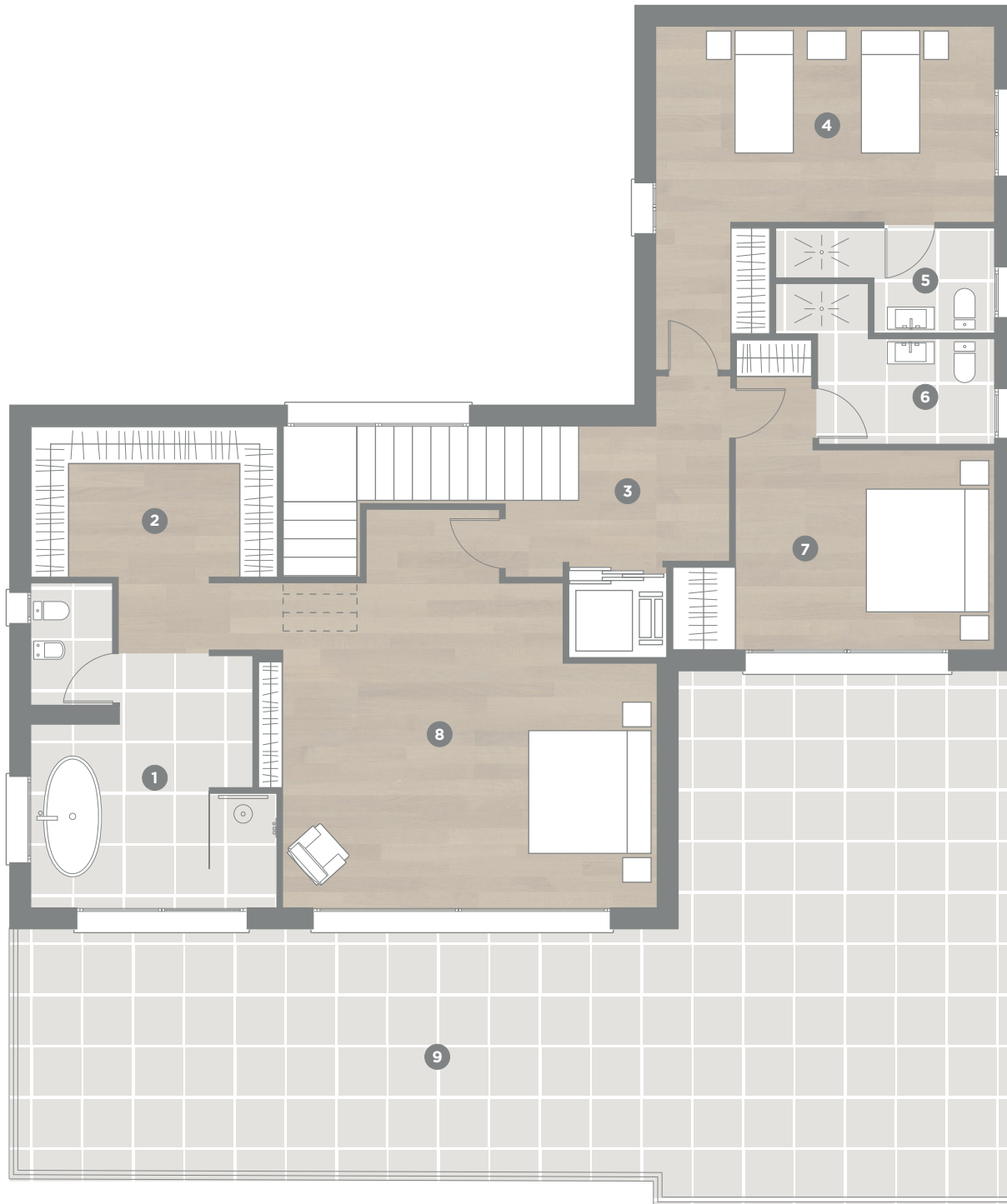


440m²

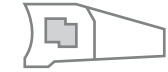
PLANTA 0

ETAGE 0 / FLOOR 0

- 1 - Cocina - 30m²**
Küche / Kitchen
- 2 - Comedor - 25m²**
Esszimmer / Dining room
- 3 - Vestíbulo y escalera - 24m²**
Diele und Treppe / Hallway and staircase
- 4 - Garaje - 33m²**
Garage / Garage
- 5 - Aseo - 5m²**
Toilette / Toilet
- 6 - Salón - 60m²**
Wohnzimmer / Living room 4
- 7 - Porche 1 - 40m²**
Veranda 1 / Porch 1



1.738m²



440m²

PLANTA 1

ETAGE 1 / FLOOR 1

- 1** - Baño 1 - 19m²
Badezimmer 1 / Bathroom 1
- 2** - Vestidor 1 - 10m²
Ankleidezimmer 1 / Dressing room 1
- 3** - Vestíbulo y escalera - 16m²
Diele und Treppe / Hallway and staircase
- 4** - Dormitorio 3 - 20m²
Schlafzimmer 3 / Bedroom 3
- 5** - Baño 3 - 5m²
Badezimmer 3 / Bathroom 3
- 6** - Baño 2 - 6m²
Badezimmer 2 / Bathroom 2
- 7** - Dormitorio 2 - 16m²
Schlafzimmer 2 / Bedroom 2
- 8** - Dormitorio 1 - 34m²
Schlafzimmer 1 / Bedroom 1
- 9** - Terraza 1 - 90m²
Terrasse 1 / Terrace 1